



## Week 4 - Locations & Game Times

The season is half over - thank you for all you've done to help make it a success! If at all possible, please combine cars as much as possible, especially for the Rugby World location as parking is limited. Even if people combine cars at a nearby shopping center parking lot - that would help tremendously. Also, please remember to stay out of the area of the field that is reserved for the coaches and players involved in the games underway. This is a player safety issue and we need to be sure the athletic trainers are able to observe the fields properly. Thank you!

We are fortunate to have these fields for use this season. Please help us by being respectful of the facilities. Clean up after yourselves. Bring trash bags. **Be sure to have enough water for your team/players. There are no filling stations at any of these locations!** Alcohol is not permitted.

### Schedules

GIRLS			
OCTOBER 13TH, 2024			
RUGBY WORLD: 4785 AVON BELDEN RD, AVON OH 44011			
TIME	FIELD 1	FIELD 2	
10:00	BWICK A	HUDSON A	NO GAME
10:20	MEDINA A	MENTOR A	W PITT B
10:40	NO GAME	NO GAME	BWICK B
11:00	W PITT A	PBURG A	NO GAME
11:20	MENTOR A	HUDSON A	MENTOR B
11:40	BWICK A	MEDINA A	BWICK B
12:00	W PITT A	J MARSHALL A	NO GAME
12:20	MEDINA A	PBURG A	W PITT B
12:40	NO GAME	NO GAME	BWICK B
1:00	BWICK A	J MARSHALL A	NO GAME
1:20	MENTOR A	W PITT A	W PITT B
1:40	HUDSON A	PBURG A	J MARSHALL B
2:00	NO GAME	NO GAME	PBURG B

BOYS NORTH			
OCTOBER 13TH, 2024			
VICTORY PARK: 777 VICTORY LN, NORTH RIDGEVILLE, OH 44039			
TIME	FIELD 1	FIELD 2	
10:00	MENTOR A	ST IGNATIUS B	ST ED'S B
10:20	HUDSON A	SHAKER A	WESTSHORE A
10:40	HIGHLAND A	ST ED'S A	ST IGNATIUS E
11:00	PBURG A	ST IGNATIUS A	ST IGNATIUS D
11:20	SHAKER A	ST IGNATIUS C	ST ED'S C
11:40	WESTSHORE A	MENTOR A	WESTSHORE B
12:00	PBURG A	HIGHLAND A	HUDSON A
12:20	ST IGNATIUS A	ST ED'S B	MENTOR B
12:40	ST ED'S A	ST IGNATIUS B	PBURG B
1:00	HIGHLAND A	MENTOR A	ST IGNATIUS E
1:20	PBURG A	ST IGNATIUS B	ST ED'S D
1:40	PERRY A	ST ED'S B	SHAKER B
2:00	HUDSON A	WESTSHORE A	PBURG B
2:20	ST ED'S A	ST IGNATIUS C	WESTSHORE B
2:40	SHAKER A	ST IGNATIUS A	SHAKER B
3:00	NO GAME	NO GAME	ST IGNATIUS F

SOUTH			
OCTOBER 13TH, 2024			
DUBLIN COFFMAN HIGH SCHOOL, 6780 COFFMAN RD, DUBLIN, OH 43017			
TIME	FIELD 1	--BOYS--	--GIRLS--
9:40	MARYSVILLE A	ST X A	DUBLIN A
10:00	MOELLER B	NOR FORCE A	MOELLER A
10:20	MOELLER C	NOR FORCE B	ST X C
10:40	ST X A	WALNUT A	ST X B
11:00	NOR FORCE A	MARYSVILLE A	MOELLER B
11:20	ST X D	MOELLER C	ST JOE'S C
11:40	ST X C	NOR FORCE B	HIGHLAND A
12:00	WALNUT A	DUBLIN A	ST JOE'S B
12:20	ST X B	MOELLER A	HIGHLAND B
12:40	ST X D	WALNUT B	CINCY B
1:00	MOELLER C	ST X C	CAP CITY A
1:20	OLENTANGY A	ST CHARLES A	CINCY A
1:40	WALNUT A	NOR FORCE A	CINCY B
2:00	ST X D	ST X C	PERRY B
2:20	WALNUT B	NOR FORCE B	CINCY A
2:40	DUBLIN A	ST X A	CINCY B
3:00	MARYSVILLE A	MOELLER A	ST JOE'S A
3:20	MOELLER B	ST X B	HIGHLAND B
3:40	PERRY B	HIGHLAND A	PERRY A
4:00	ST JOE'S B	ST JOE'S C	CAP CITY A

### Field Maps



#### GIRLS

**Rugby World**  
4785 Avon Belden Road  
Avon OH 44011

Park in the back lot until it is full. This is the closest parking to Tent City.

**Please carpool if at all possible**

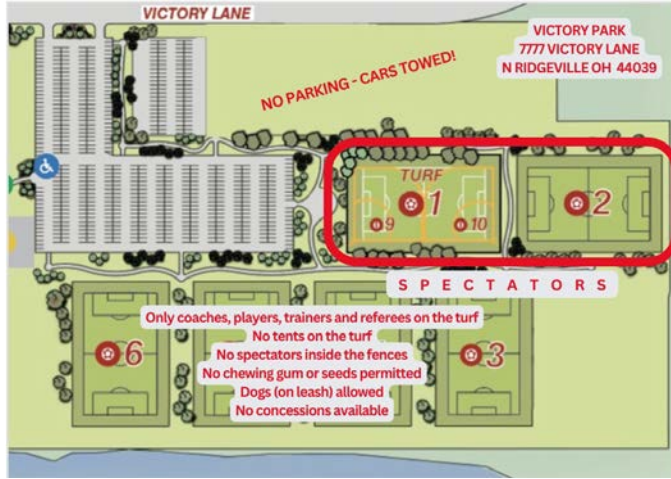
No concessions available

Leashed dogs welcome

Please walk around the fields and not in between for player safety reasons

#### BOYS NORTH

**Victory Park**  
7777 Victory Lane  
N Ridgeville OH 44039



- Only coaches, players, assigned trainers & refs on the turf
- No team tents on the turf
- No concessions
- Leashed dogs welcome
- No chewing gum
- No seeds



**SOUTH**

**Dublin Coffman High School  
6750 Coffman Road  
Dublin, OH 43017**

- Use the walking path to get from the parking lot to the field area
- Concessions available
- Leashed dogs welcome

**Playoff Information**

**Girls**

There are 12 A side teams competing in the finals. Top 6 will compete for the Cup. Bottom 6 will compete for the Shield. Each group will be divided into two pools (seeds 1, 4 and 6; seeds 2, 3 and 5). There will be 2 pool play games. After pool play is finished, #1 in each pool will play in the finals: #2 in each pool will play for 3rd/4th; #3 in each pool will play for 5th/6th.

Each team may bring a 2nd side to play in additional games. Each 2nd side will have 2 scheduled matches.

GIRLS FINALS, RUGBY WORLD		
	CUP FIELD	SHIELD FIELD
10:00	Pool play	Pool play
10:20	JV Game	JV Game
10:40	JV Game	JV Game
11:00	Pool play	Pool play
11:20	JV Game	JV Game
11:40	JV Game	JV Game
12:00	Pool play	Pool play
12:20	JV Game	JV Game
12:40	field break	field break
1:00	5th/6th	5th/6th
1:20	3rd/4th	3rd/4th
1:40	1st/2nd	1st/2nd

## Boys

There are 17 A side teams competing in the finals. The top 8 (top 4 from the north and top 4 from the south) will compete for the Cup. The bottom 8 will compete for the Shield. Four quarterfinal matches will take place, followed by 2 semifinals (and 2 consolation matches) and then place games. At the end of Week 5, the 8th and 9th place teams from the north will play to determine the #8 seed for the Shield competition.

Each team may bring a 2nd side to play in additional games. Each 2nd side will have 2 scheduled matches.

BOYS FINALS					
CUP FIELD			SHIELD FIELD		
10:00	JV Game		10:00	JV Game	
10:20	QF1	N1 vs S4	10:20	QF1	N5 vs S8
10:40	QF2	S1 vs N4	10:40	QF2	S5 vs N8
11:00	QF3	N2 vs S3	11:00	QF3	N6 vs S7
11:20	QF4	N3 vs S2	11:20	QF4	N7 vs S6
11:40	JV Game		11:40	JV Game	
12:00	JV Game		12:00	JV Game	
12:20	Cons 1	L QF1 vs L QF3	12:20	Cons 1	L QF1 vs L QF3
12:40	Cons 2	L QF2 vs L QF4	12:40	Cons 2	L QF2 vs L QF4
1:00	SF1	W QF1 vs QF3	1:00	SF1	W QF1 vs QF3
1:20	SF2	W QF2 vs QF4	1:20	SF2	W QF2 vs QF4
1:40	JV Game		1:40	JV Game	
2:00	JV Game		2:00	JV Game	
2:20	7th/8th	L cons 1 vs L cons 2	2:20	7th/8th	L cons 1 vs L cons 2
2:40	5th/6th	W cons 1 v W cons 2	2:40	5th/6th	W cons 1 v W cons 2
3:00	3rd/4th	L SF1 vs L SF2	3:00	3rd/4th	L SF1 vs L SF2
3:20	Finals	W SF1 vs W SF2	3:20	Finals	W SF1 vs W SF2

## Respect the Referee

As a result of the nationwide referee shortage, some of which is a result of referee abuse, the Ohio Rugby Referee Society has implemented a new Black Card option for officials.

If the referee identifies a situation he or she would like addressed, the Black Card will be issued. Time will stop. The referee will communicate the problem and allow time for the situation to be remedied. Once this happens, the game will resume. If the problem persists, the referee will issue the Black Card again and the game will be called. Whichever team is associated with the problem will lose the game by forfeit and points will be deducted from league standings.

Please help us avoid having any Black Cards issued at our rugby events! Thank you for your cooperation and support of all players!



## 2024/25 Dates for your Calendar

October 27th - Fall Championships  
 November 1st - Spring 2025 Registration opens  
 May 17/18 - High School Quarterfinals  
 May 24/25 - High School Semifinals  
 May 31st - HS State Championships  
 June 7th - Regional Select Matches  
 June 14/15 - Buckeye Invitational

Forward this newsletter to a friend!

Connect with Us



[RugbyOhio.com](http://RugbyOhio.com)

Rugby Ohio | PO Box 45400 | Westlake, OH 44145 US

[Unsubscribe](#) | [Update Profile](#) | [Constant Contact Data Notice](#)



Try email marketing for free today!